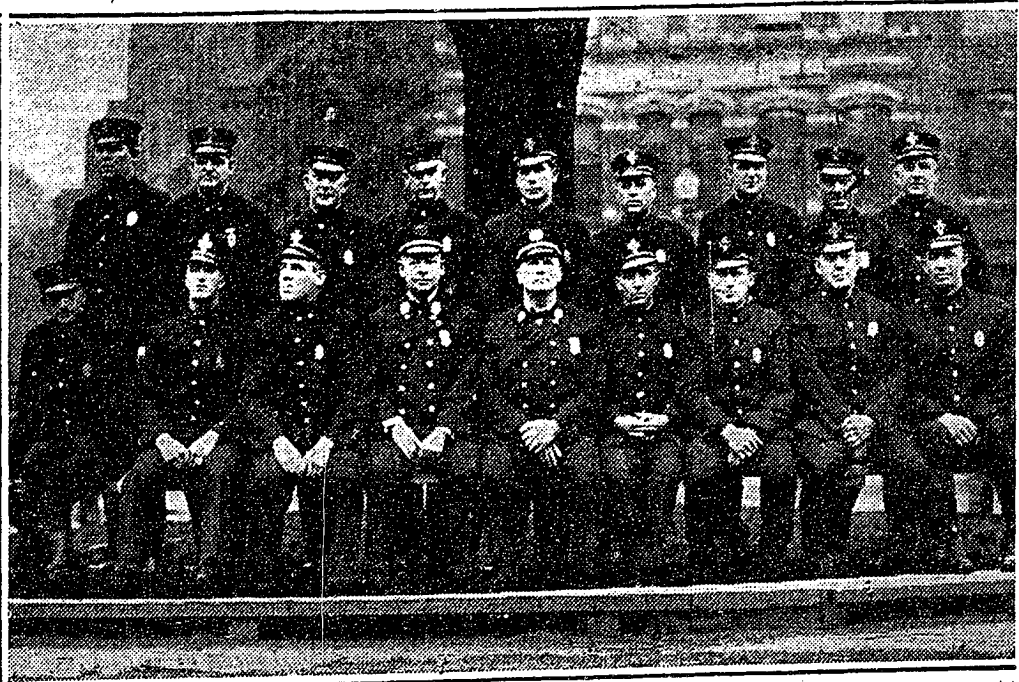


YOUNG CREW OF LADDER 8 LEADS DEPARTMENT IN ANNUAL DRILLS

Completes 10 Evolutions in 7 Minutes, 8 Seconds; Veteran Firemen Who Won Last Year Third



LADDER 8, COMPANY CHAMPIONS

Front Row, Left to Right—J. T. Angel, H. D. Gilman, Edward F. Doyle, Capt John F. McDonough, Lieut Thomas D. Brown, Mike Fallon, J. F. O'Shea, Samuel J. Pope, Paul L. Doherty. Back Row—B. J. Phillips, Carl Anderson, J. F. Daly, C. H. Foss, John P. Hanagan, E. F. Power, F. J. Newell, E. I. O'Dowd, Thomas F. Mellyn.

That youth and speed will eventually come into their own has been a saying that did not run true to form in the Boston Fire Department during 1923 and 1924, but in 1925, according to figures compiled, Capt Jack McDonough and Lieut Tom Brown, with their crew of fire fighters of Ladder 8, located at Fort Hill sq, have again put the "young fellows" at the head of the class.

These figures were yesterday sent to Fire Commissioner Theodore A. Glynn and Chief Daniel F. Sennott by Drillmaster Capt Daniel Baker and show the works of every land company in the department at the annual drills at the drill yard of the Fire Department on Bristol st.

Capt McDonough and his crew required seven minutes and eight seconds to do 10 evolutions in regular fire-fighting work, leading the second company by 20 seconds, and the two companies tied for third place by 22 seconds. One of the third-place companies, Engine 20 of Neponset, which is under the command of Capt Fred Adams, is made up entirely of veterans of 20 or more years' service. This company led the department in 1924.

Good Times Made

A feature of the drill this year was the fact that every district in Division

1 had one or more companies complete the work in less than eight minutes, with District 7, of the second division, having Ladder 2 and Ladder 13, and District 14, of the third division, with Engine 20, also rating places in this special class.

Remarkably good time was established in every evolution. For Evolution 1, which calls for the laying of two lines of 2½-inch hose, connecting to engine and deluge set, Engine Company 24, of Warren st, Roxbury, took but 23 seconds. The times for the other evolutions follow:

Evolution 2, laying two lines of hose, connecting to engine and deck gun on wagon, Engine 25, Fort Hill sq, and Ladder 25, West Roxbury, 17 seconds.

Evolution 3, throwing a 50-foot ladder to fourth story window and securing it, Ladder 8, 46 seconds.

Evolution 4, taking 200 feet of 2½-inch hose over this ladder and up an interior stairway and showing pipe at fifth story window, Engine 20, 53 seconds.

Evolution 5, throwing a 30-foot ladder to fire escape, securing it and taking a 17-foot ladder over it and the fire escape to the landing above, Ladder 8 and Ladder 12, tied at 64 seconds.

Evolution 6, taking 250 feet of hose from wagon, connecting to engine, over 30-foot ladder and fire escape to roof,

75 feet above the ground, Engine 20, one minute, seven seconds.

South Boston Crew Leads

Evolution 7, taking life-line over ladder and fire escape to roof, dropping end which is made secure to a 25-foot ladder which is hoisted to the roof, Engine Company 1, Dorchester st, South Boston, 7m 3s.

Evolution 8, hoisting 100 feet of 2½-inch hose to the roof with the life-line, Engine 7, East st; Engine 10, Mt Vernon st, and Engine 50, Winthrop st, Charlestown, tied at 23s.

Evolution 9, laying 100 feet of 2½-inch hose, connecting to engine, Morse gate and Bresnan nozzle, Ladder 12, Tremont st, 12s.

Evolution 10, connecting chuck to hydrant, suction to chuck and engine and passing water through engine, Engine 30, Monument st, Charlestown, 22s.

The company records by districts were as follows:

- Dist 1, Chemical Co 7-7m 43s.
- Dist 2, Engine Co 50-7m 28s.
- Dist 3, Ladder Co 8-7m 8s.
- Dist 4, Engine Co 8-7m 40s.
- Dist 5, Engine Co 7-7m 52s.
- Dist 6, Engine Co 1-8m 5s.
- Dist 7, Ladder Co 3 and Ladder 13-7m 45s.
- Dist 8, Ladder Co 12-8m 15s.
- Dist 9, Engine Co 23-9m 18s.
- Dist 10, Engine Co 17-8m 25s.
- Dist 11, Engine Co 24-8m 35s.
- Dist 12, Ladder Co 10-8m 15s.
- Dist 13, Ladder Co 25-9m 30s.
- Dist 14, Engine Co 20-7m 40s.
- Dist 15, Ladder Co 28-9m 27s.